

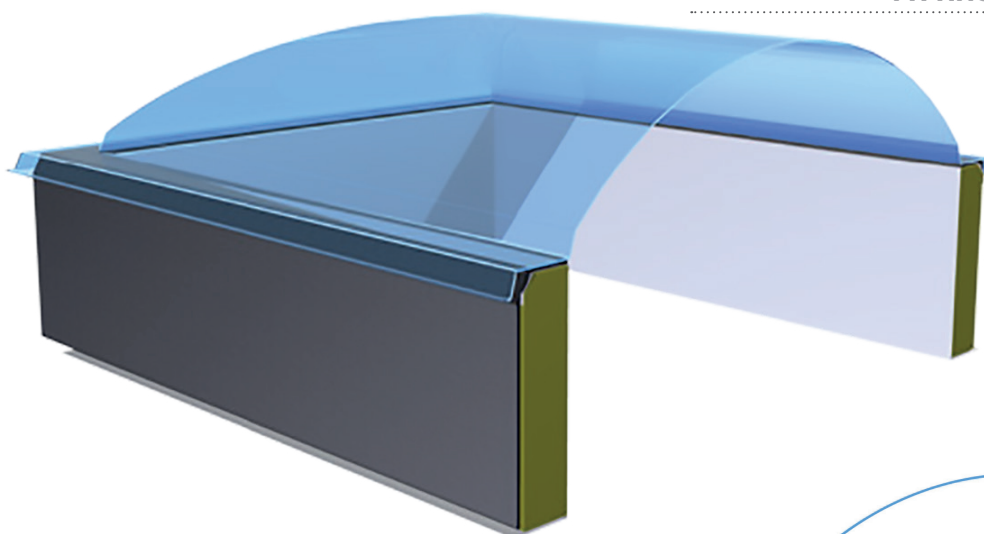
MONOLITHIC SKYLIGHTS

with rectangular curb LR and square curb LQ

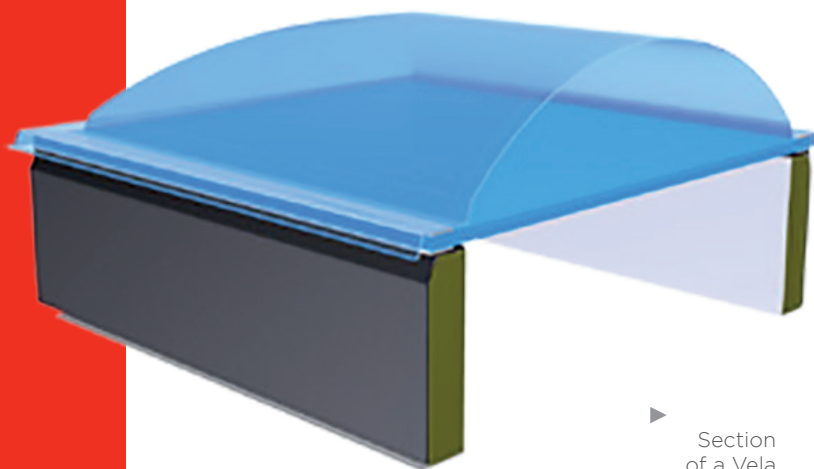
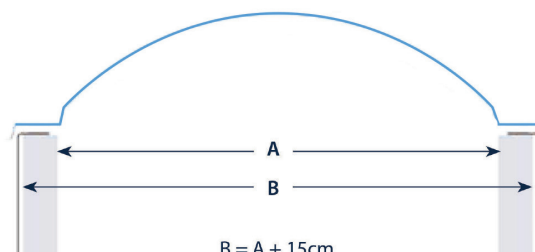
ALL THE COMFORTS OF NATURAL LIGHT ✓

GREEN: WATER-ONLY CLEANING ✓

FITTINGS ALWAYS INCLUDED ✓



▶ Section of a Vela skylight



▶ Section of a Vela skylight with blind

These monolithic skylights are produced by thermoforming compact or alveolar polycarbonate sheets of varying thicknesses. They are available in standard opal and transparent colours.

To fulfil various thermal insulation requirements, each skylight can be paired with a flat blind constructed from alveolar polycarbonate, available in thicknesses of 16/25/40 mm, to ensure exceptional performance.

In cases where it is necessary to permanently obscure the areas beneath the skylights, the blind can be rendered opaque by utilizing a white bilayer sandwich panel. For cleaning the skylights, only water is required, and no additional chemical detergents are needed.

Fittings are always included, and the 3D design ensures the appropriate type and quantity for each application.

PERFORMANCE CLASSES IN DoP

PRODUCT DESCRIPTION	Monolithic Skylight LR - LQ	IMPACT RESISTANCE	# If there is an underlying grid
SERIAL NUMBER:	#####	THERMAL TRANSMITTANCE	UW= # W/mqk
INT/EXT PRESSURE RESISTANCE:	NDP	SOUND INSULATION	NDP
EXT/INT PRESSURE RESISTANCE:	NDP	LIGHT TRANSMITTANCE	#
FIRE REACTION:	B-s1, d0 for polycarbonate	AIR PERMEABILITY	NDP
EXTERNAL FIRE REACTION:	NDP	SOLAR FACTOR - G	#
WATER TIGHTNESS:	NDP	SUSTAINABILITY	NDP

Prestazione variabile in funzione della configurazione del prodotto